



norament<sup>®</sup> 975 LL

REMOVABLE FLOOR COVERING

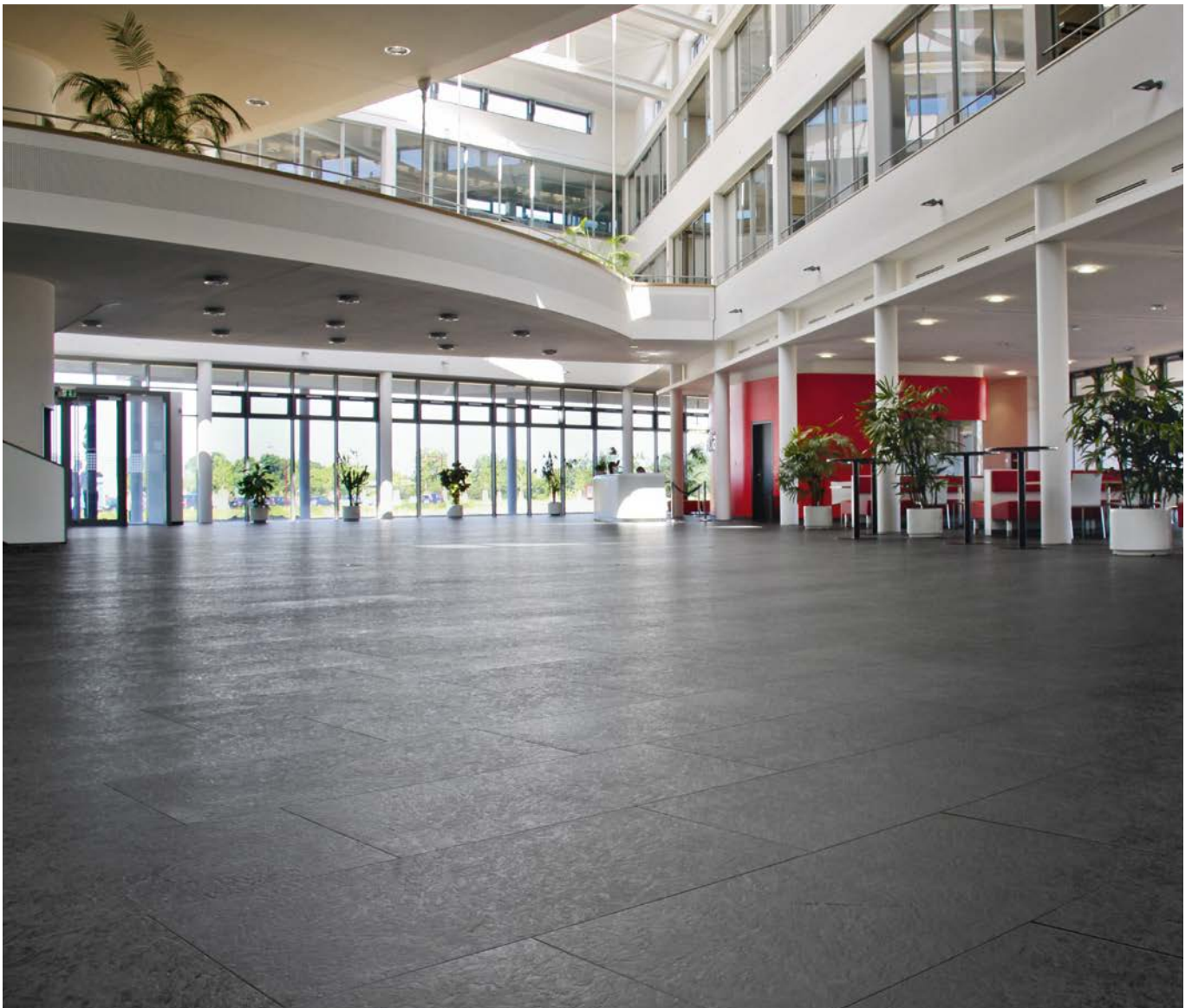
**nora**<sup>®</sup>  
by **Interface**<sup>®</sup>

# Benefits of norament® 975 LL

## **Fast installation and no impairment for building users or residents**

norament® 975 LL is a removable rubber floor covering that can be quickly installed with the help of a suitable tackifier. It can be used immediately after installation. This floor covering is particularly designed for installation on raised access panels, existing old flooring, for the renovation of asbestos floors and for temporary installation.

- ▶ Replaceable, removable tiles
- ▶ Reuse of floor covering possible
- ▶ Fast installation without major restrictions for building users and residents
- ▶ Elimination of drying and waiting times
- ▶ Suitable for installation on raised access panels
- ▶ Possible to install directly on top of old vinyl asbestos tiles
- ▶ Free from PVC, phthalate plasticisers and halogens
- ▶ Long-term dimensionally stable tiles, no joint sealing necessary
- ▶ Fire classification Bfl-s1 according to EN 13501
- ▶ High walking and standing comfort and good sound insulation (footfall sound absorption of 8 dB)



# Installation of norament 975 LL

## **norament 975 LL can be easily and quickly installed**

For professional installation, please consider our detailed installation recommendation which can be found on our website or contact us. Below are the most important steps in the laying of norament 975 LL.

### **Installation pictures**



Apply a suitable tackifier



Install the floor covering



Rub the floor covering with a cork board



Possible to remove and reuse the flooring

### **Notes**

norament® 975 LL cannot be installed under certain conditions. We are happy to advise you if:

- ▶ The floor in your rooms is often exposed to moisture
- ▶ Heavy loads can be moved in your rooms (e.g. using forklifts)
- ▶ The floor in your rooms is subject to strong temperature fluctuations

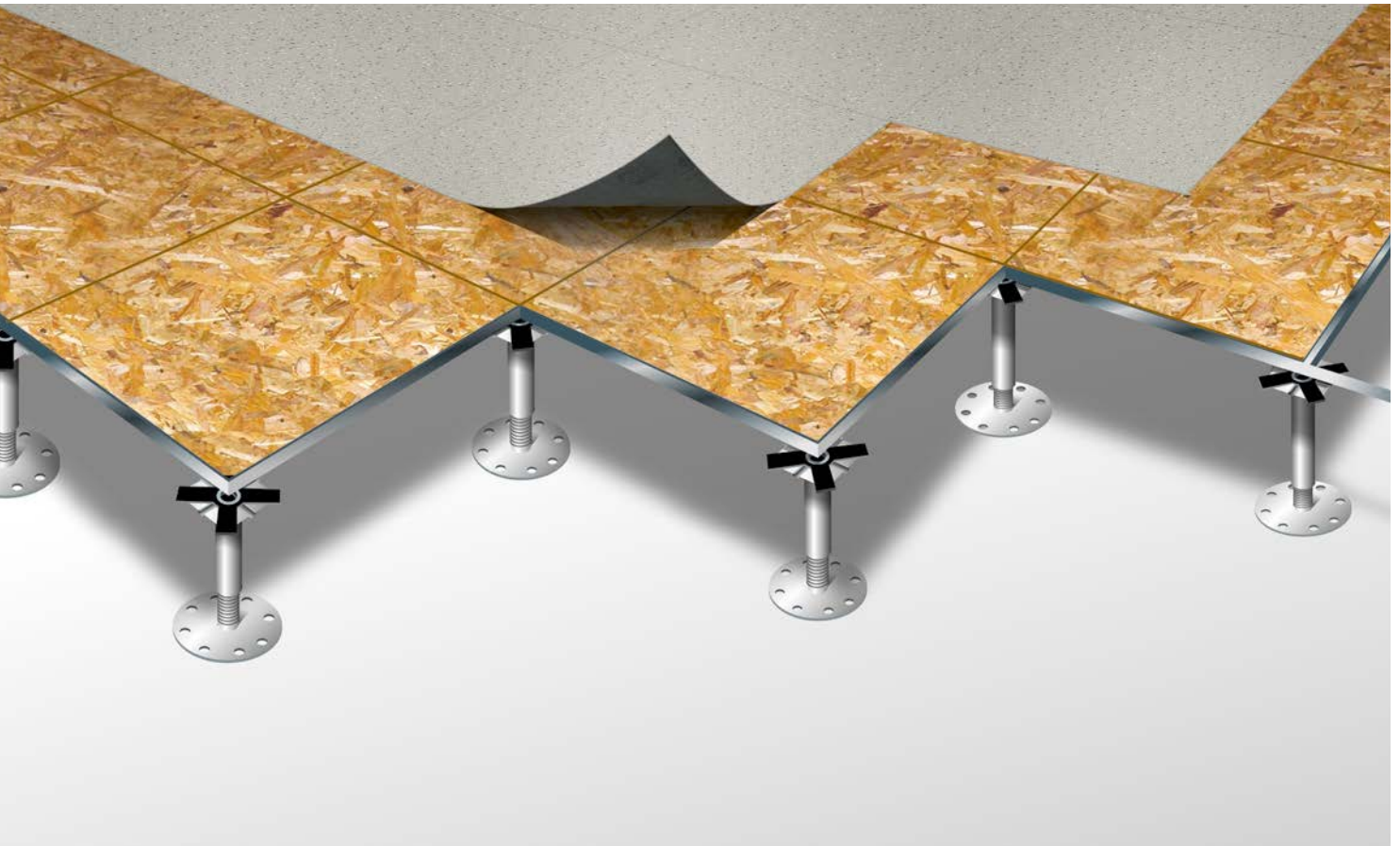


# Raised access panels

The removable tiles of norament® 975 LL are suitable for raised access panels, regardless of their size. During installation, they are fixed with a suitable tackifier and can be replaced at any time.

A raised floor laid with norament® 975 LL is easy to clean thanks to its dense and sealed rubber surface. It also promotes a healthy indoor climate and does not need to be coated (very complicated on a raised access panel as it is not possible to distribute liquids on it).

Thanks to its resilient properties, the rubber ensures good acoustics and high walking and standing comfort. Its antistatic properties also protect materials and people from electric shocks. Another advantage of rubber is that the tiles are dimensionally stable and therefore no joint sealing is necessary.



# Areas of application

## Office buildings



© nora systems



©The Studio Agency

norament® 975 LL is suitable for raised access panels in office spaces. The floor covering allows for a quick renovation without the need to close off the rooms. It is also hygienic and easy to clean.

## Temporary exhibitions and museums



© Stuart McCall



© Oliver Heinemann

Replaceable tiles can be easily laid and removed. They are reusable and therefore ideal for temporary exhibitions.



# Areas of application

## Retail



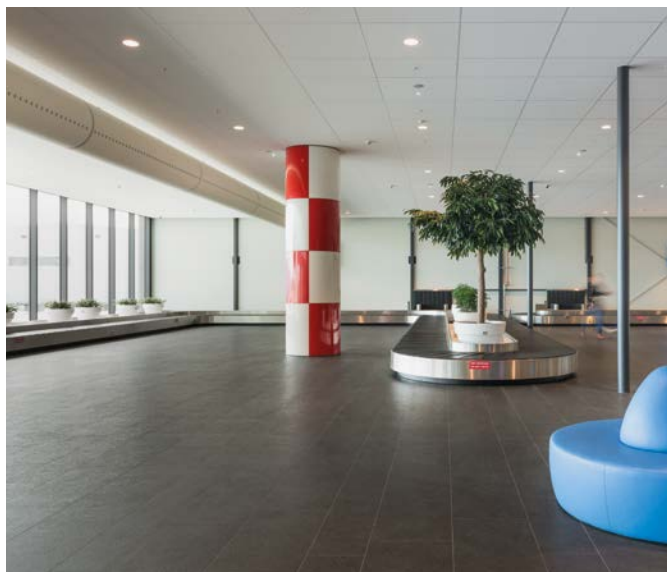
© Thomas Goos



© Richard Reinalter

The fast installation of norament® 975 LL minimises installation times. For example, the work can be carried out on a Sunday or in different areas without the need to close the shop, as the flooring is accessible immediately after installation.

## Public buildings



© CR-Beeldwerken



© Flughafen Wien AG/Roman Boensch

The removable tiles of norament 975 LL can be laid quickly, even on existing floor coverings. They withstand a very high level of stress.

## School buildings and universities



© Frank Aussieker



© Adam Mørk

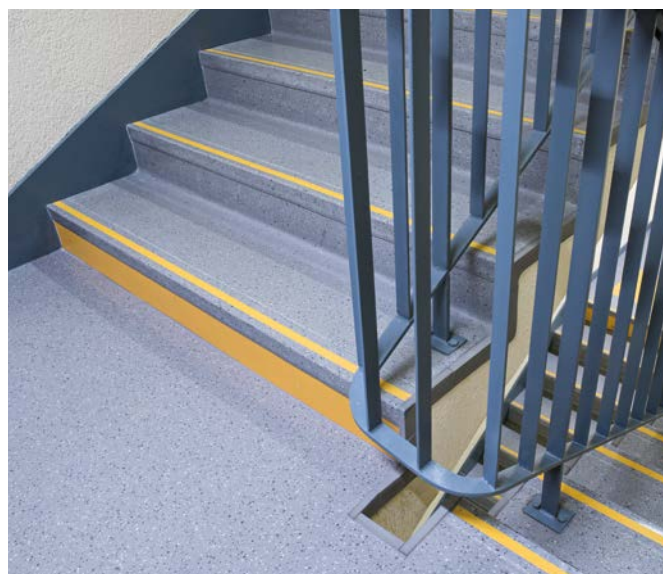
norament® 975 LL is suitable for a wide variety of buildings. This includes, in particular, solutions for premises where work has to be carried out on old vinyl asbestos tiles.

The college in Westminster, England, was completely renovated without the establishment having to be closed.

## Apartment blocks



© nora systems



© Vincent Uettwiller

Vinyl asbestos tiles are still laid in many common areas. norament® 975 LL is the ideal solution for renovating these areas.

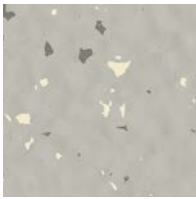


# norament® 975 LL

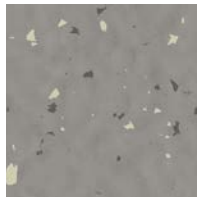
Removable floor covering that can be quickly installed with the help of an appropriate tackifier. Once fitted it can be used immediately. Particularly suitable for raised access panels, existing old floor coverings and for temporary installations.

## norament® 975 LL · grano design

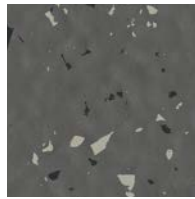
Hammerblow surface



5302



5303



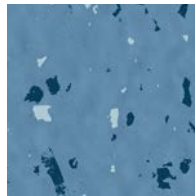
5304



5329



5314



5318

### norament® 975 LL

6

Art. 975 LL/1880

□ ~1000 mm x 1000 mm

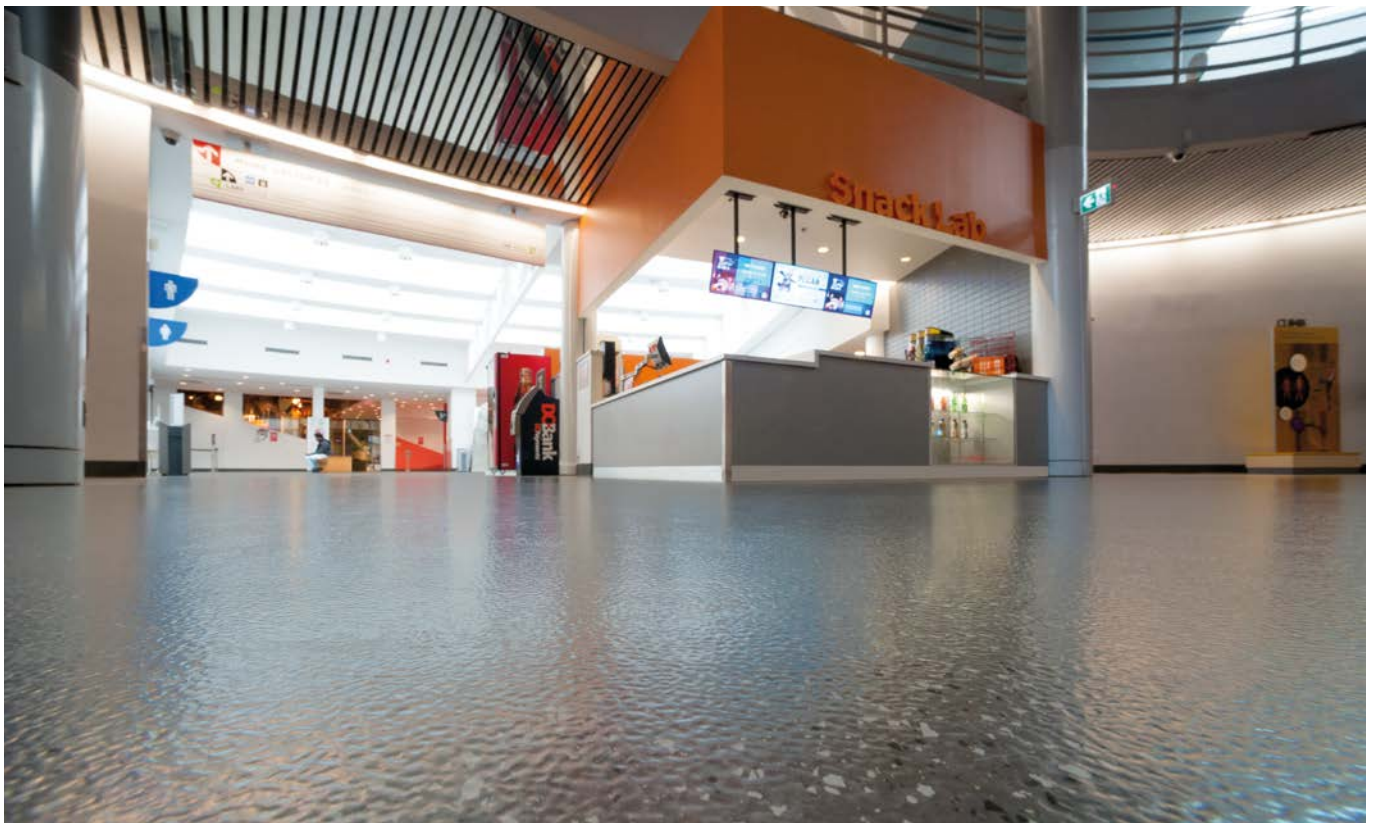


~3.5 mm

nora® profile connection dimension: E + U

**Special colours are available on request.  
Please ask for minimum quantities and  
delivery times.**

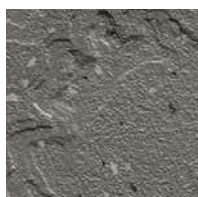
The differences between the design of norament® 975 LL and the standard product norament® 926 grano are production-related. Please request individual colour samples of the required norament® product.



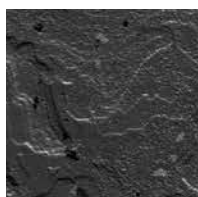


# **norament® 975 LL** · serra design

Relief structure



4930



4929

## **norament® 975 LL**



**Art. 975 LL/3042**

□ ~1000 mm x 500 mm



nora® profile connection dimension: E + U

Please note: We supply tiles with chamfered edges on request (Art. 3043).

**Special colours are available on request.  
Please ask for minimum quantities and  
delivery times.**



Cover picture: © nora systems

Errors as well as misprints and changes reserved. No guarantee is given for the accuracy and completeness of the information. The product images in this document may differ from the original. This document is not a contractual offer and only serves to provide non-binding information.

The nora brand and all other registered trademarks used in this document are registered to the company, the country or to a company associated with nora systems GmbH. Other labels used here are trademarks of their respective owners.

Contact details, local branches or authorised retailers, as well as other information can be found at [www.nora.com](http://www.nora.com).

**Publisher**

nora systems GmbH

Höhnerweg 2-4

69469 Weinheim | Germany

[www.nora.com](http://www.nora.com)